

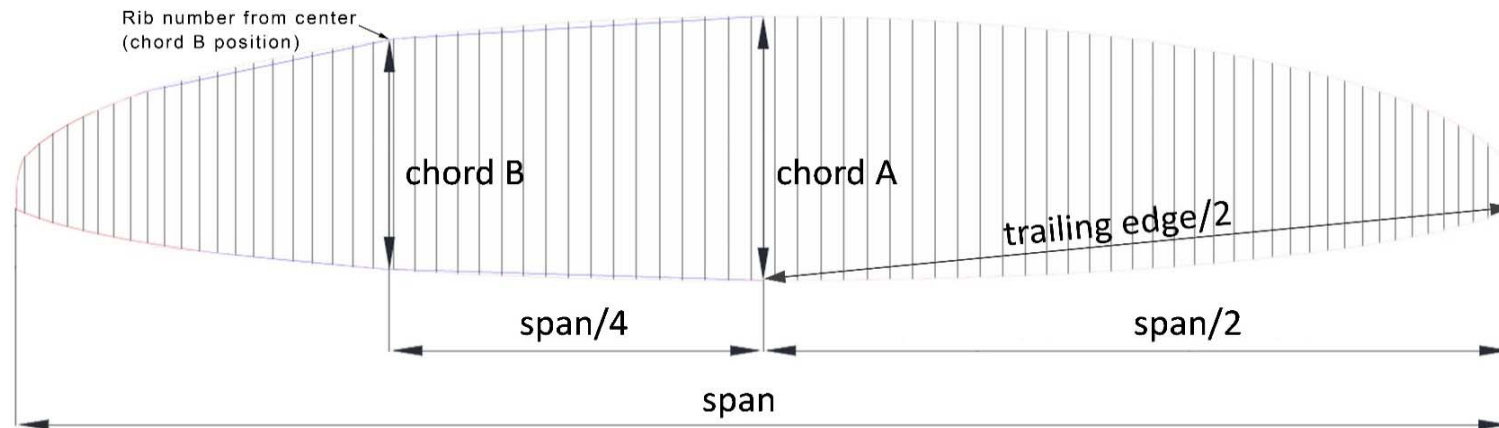
Measurement Report Template

CIVL CCC 2020 (Version 1.1)

Brand	Gin Gliders Inc.	Size	M	Test laboratory Cert. #	n/a
Model	Boomerang 13	Serial #	BN02-Q1080312P	Certification date	20.03.2024

Canopy dimensions

Position	Rib # from center	Distance [mm]	Tension [daN]	Manual tolerances	Aspect ratio $4 \cdot \text{span} / (\text{chord A} + 2.5 \cdot \text{Chord B})$	Number cells	Scale factor
Full Span		13401	5	+/-2%	7,59	111	1,08
1/2 Trailing Edge		6732	5	+/-1%			
Chord A		2129	1	+/-1%			
Chord B	25	1974	1	+/-1%			



Chord lenght, inlet position, tabs position measured from trailing edge.

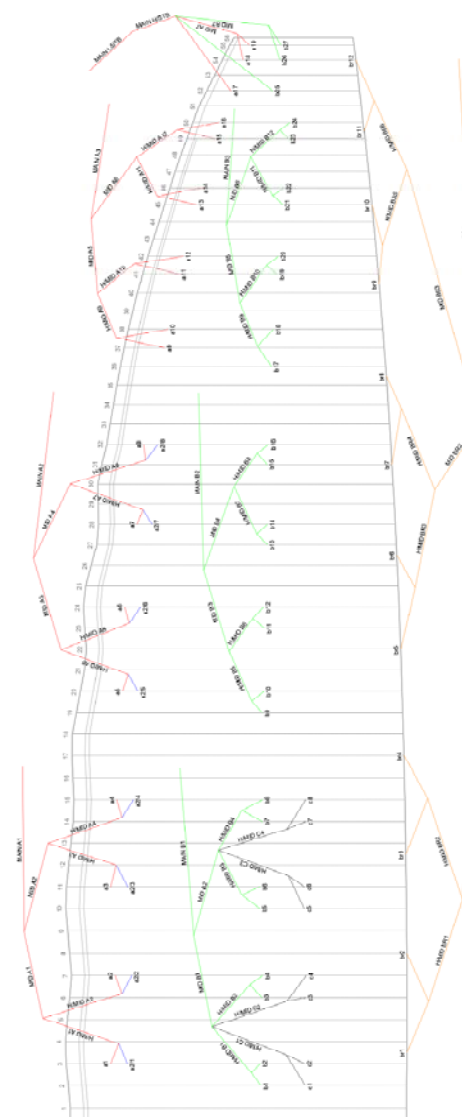
(The tab A & B & C can be on different rib, take care to specify it)

On first lined rib (from center)	Rib n° from center	Distance [mm]	Tension [daN]	Manual tolerances
Chord	2	2140	1	+/-1%
Top of inlet	2	2055	1	+/-1%
Bottom of inlet	2	2028	1	+/-1%
Tab Aa*	3	1881	1	+/-10mm
Tab Ab*	3	1774	1	+/-10mm
Tab B*	2	927	1	+/-10mm
Tab C*	2	647	1	+/-10mm

On last lined rib of Group 2 (from center)	Rib n° from center	Distance [mm]	Tension [daN]	Manual tolerances
Chord	32	1773	1	+/-1%
Top of inlet	32	1702	1	+/-1%
Bottom of inlet	32	1680	1	+/-1%
Tab Aa*	32	1547	1	+/-10mm
Tab Ab*	32	1459	1	+/-10mm
Tab B*	32	768	1	+/-10mm

On last lined rib (stabilo, from center)	Rib n° from center	Distance [mm]	Tension [daN]	Manual tolerances
Chord	55	490	1	+/-1%
Tab A*	55	415	1	+/-10mm
Tab B*	55	290	1	+/-10mm

*Bridle (tab) position measurement:
end of trailing edge to center bridle (tab)





Measurement Report Template

CIVL CCC 2020 (Version 1.0)

ABSOLUTE LINE LENGHT

Absolute line length from bottom riser to canopy in mm with 5daN of tension (Manual tolerances +/-10mm)
For scaled sizes: lines are within +/-20mm of the initial size x scale factor

Number	A1			A2			B		
	Glider	Manual	Delta	Glider	Manual	Delta	Glider	Manual	Delta
27								7429	
26								7393	
25								7426	
24								7613	
23								7601	
22								7619	
21								7641	
20								7715	
19		7410						7729	
18		7379						7827	
17		7462						7922	
16		7610						8057	
15		7587						8038	
14		7605						8041	
13		7630						8061	
12		7711						8117	
11		7729						8130	
10		7842						8235	
9		7891						8285	
8		8054			8037			8363	
7		8059			8041			8336	
6		8136			8114			8310	
5		8275			8253			8327	
4		8366			8346			8365	
3		8342			8315			8371	
2		8382			8360			8464	
1		8496			8473			8519	
1		8496			8473			8519	
2		8382			8360			8464	
3		8342			8315			8371	
4		8366			8346			8365	
5		8275			8253			8327	
6		8136			8114			8310	
7		8059			8041			8336	
8		8054			8037			8363	
9		7891						8285	
10		7842						8235	
11		7729						8130	
12		7711						8117	
13		7630						8061	
14		7605						8041	
15		7587						8038	
16		7610						8057	
17		7462						7922	
18		7379						7827	
19		7410						7729	
20								7715	
21								7641	
22								7619	
23								7601	
24								7613	
25								7426	
26								7393	
27								7429	

Number	C		
	Glider	Manual	Delta
4		8445	
3		8449	
2		8538	
1		8592	
1		8592	
2		8538	
3		8449	
4		8445	

Number	C		
	Glider	Manual	Delta
8		8437	
7		8414	
6		8385	
5		8403	
5		8403	
6		8385	
7		8414	
8		8437	

Measurement Report Template

CIVL CCC 2020 (Version 1.0)

Riser length

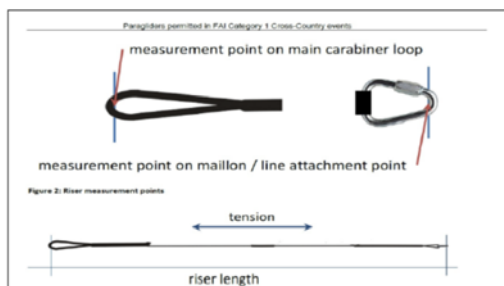
From bottom riser to top maillon on each branche in mm with 5daN (Manual tolerances +/-5mm)

Trimm speed setting	A	A'	Stabi	B	Δt (= A1-B)	Attachment rod \varnothing [mm]
Manual	520	485	505	520	0	10
Glider					0	

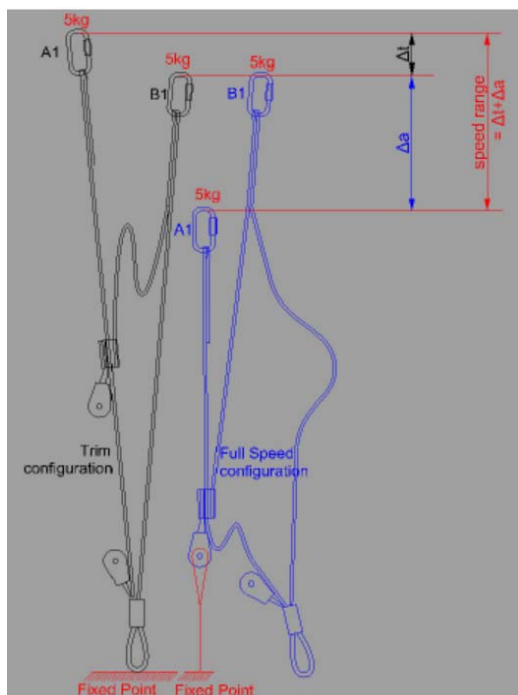
Full speed setting	Δa (=B-A)	B-A'	Total speed range ($\Delta t + \Delta a$)
Manual	142	125	142
Glider			0

High speed setting	Δa (=B-A1)	Total high speed range > 100
CCC	100	100
Glider		0

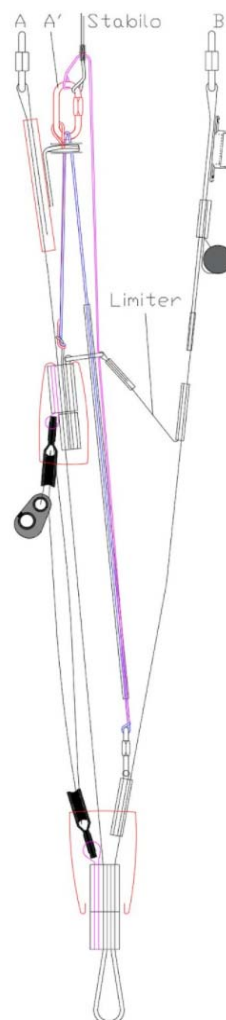
Riser measurment points



Riser measurment lengths



Riser drawing (manufacturer)





Measurement Report Template

CIVL CCC 2020 (Version 1.0)

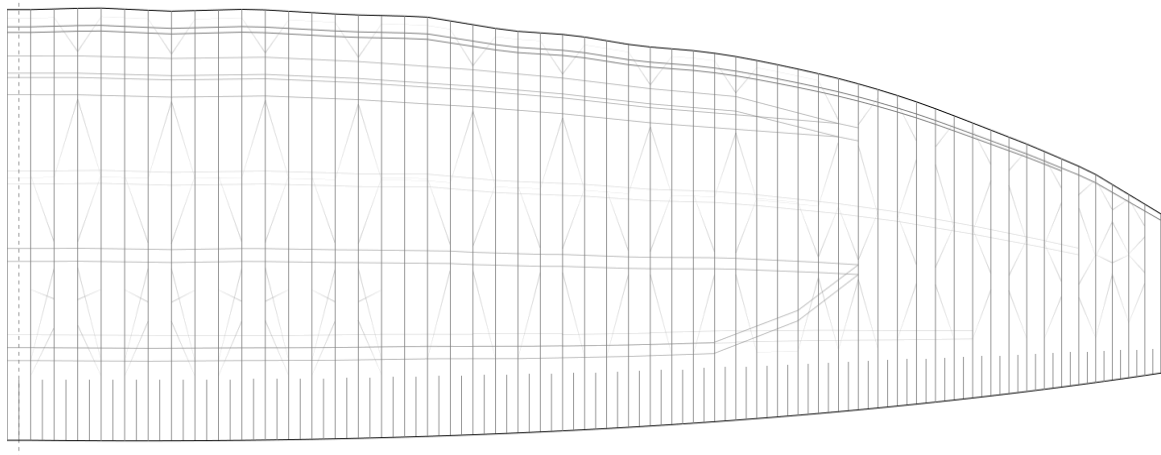
Table of line materials										
Upper										
	A1		A2		B		C		BR	
1	Edlerid	8001-090	Edlerid	8001-090	Edlerid	8001-050	Edlerid	8001-025	Edlerid	8001-025
2	Edlerid	8001-070	Edlerid	8001-050	Edlerid		Edlerid		Edlerid	
3	Edlerid	8001-070	Edlerid		Edlerid		Edlerid		Edlerid	
4	Edlerid	8001-070	Edlerid		Edlerid		Edlerid		Edlerid	
5	Edlerid	8001-090	Edlerid		Edlerid		Edlerid		Edlerid	
6	Edlerid	8001-070	Edlerid		Edlerid		Edlerid		Edlerid	
7	Edlerid	8001-070	Edlerid		Edlerid		Edlerid		Edlerid	
8	Edlerid	8001-070	Edlerid		Edlerid		Edlerid		Edlerid	
9	Edlerid	8001-050		Edlerid	8001-050		Edlerid		Edlerid	
10	Edlerid			Edlerid			Edlerid			
11	Edlerid			Edlerid			Edlerid			
12	Edlerid			Edlerid			Edlerid			
13	Edlerid			Edlerid			Edlerid			
14	Edlerid			Edlerid			Edlerid			
15	Edlerid			Edlerid			Edlerid			
16	Edlerid			Edlerid			Edlerid			
17	Edlerid	8000-025		Edlerid	8000-025		Edlerid		Edlerid	
18	Edlerid			Edlerid			Edlerid			
19	Edlerid			Edlerid			Edlerid			
20				Edlerid			Edlerid		Edlerid	
21				Edlerid			Edlerid			
22				Edlerid			Edlerid			
23				Edlerid			Edlerid			
24				Edlerid			Edlerid			
25				Edlerid			Edlerid			
26				Edlerid			Edlerid			
27				Edlerid			Edlerid			
H/middle										
	A			B				BR H/Middle		
1	Edlerid	8001-130		Edlerid	8001-050	Edlerid	8001-050	Edlerid	8001-025	
2	Edlerid			Edlerid		Edlerid		Edlerid		
3	Edlerid			Edlerid		Edlerid		Edlerid		
4	Edlerid	Edlerid		Edlerid		Edlerid				
5	Edlerid	8001-090		Edlerid			Edlerid			
6	Edlerid			Edlerid			Edlerid			
7	Edlerid			Edlerid			Edlerid			
8	Edlerid			Edlerid			Edlerid			
9	Edlerid	8001-070		Edlerid		Edlerid				
10	Edlerid			Edlerid		Edlerid				
11	Edlerid			Edlerid		Edlerid				
12	Edlerid			Edlerid		Edlerid				
Middle										
	A			B				BR L/Middle		
1	Edlerid	8001-190		Edlerid	8001-070		Edlerid	8001-050		
2	Edlerid			Edlerid			Edlerid			
3	Edlerid			Edlerid			Edlerid			
4	Edlerid			Edlerid			Edlerid			
5	Edlerid	8001-090		Edlerid			8001-025			
6	Edlerid	8001-090		Edlerid						
7	Edlerid	8001-025		Edlerid						
Main										
	A			B				BR H/Main		
1	Edlerid	8001-340		Edlerid	8001-190		Edelrid	8001-090		
2	Edlerid			Edlerid	8001-190		BR L/Main			
3	Edlerid	8001-190		Edlerid	8001-090		GIN	TGL220		
STB H/Main	Edelrid	8001-070								
STB L/Main	Liros	PPSL-065								

Measurement Report Template

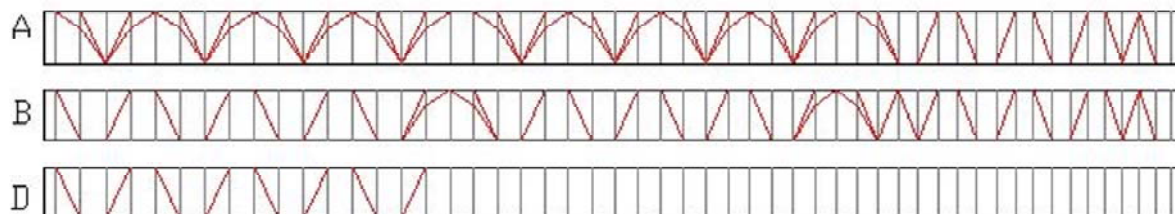
CIVL CCC 2020 (Version 1.0)

Drawings and pictures

Diagonals, Hstraps and Mini Ribs (bottom view)



Diagonals (Front view)



Vent (Inlet) shape

