



## **World and Continental Gliding Championships**

### **Initial Bid Form**

*All the information sought in this bid document must be completed prior to its submission. Details, such as a diagram of the airfield, may be included as an Annex. When completed an electronic copy of this form must be sent to the IGC Bid Specialist Mandy <mandytemple.australia.igc@gmail.com> before the closing deadline of September 30 of the year prior to the presentation of the Bid to the IGC Plenary. When the information on this form has been checked and amended as necessary, the IGC Bid Specialist will forward it to the IGC Secretary.*

*The form has been updated this year to address an issue with alterations to Entry and Tow costs after a bid is accepted. Please see Section 6 for more details.*

#### **Applicant:**

Deutscher Aero Club e.V. (German Aero Club, "DAeC"). The DAeC has more than 90.000 members. 25.818 of these are glider pilots.

Date of Application: December 2022

#### **Organising Gliding Club or other organisation:**

Baden-Württembergischer  
Luftfahrtverband e.V. (BWLTV)  
Scharrstr. 10  
70563 Stuttgart  
Germany

Luftsportring Aalen e.V.  
Hinteres Härtle 6  
  
73450 Neresheim  
Germany

#### **Name and address of National Aero Club:**

Deutscher Aero Club e.V.  
Bundeskommision Segelflug  
Hermann-Blenk-Straße 28  
38108 Braunschweig  
Germany

#### **Proposed Competition Director:**

Dr. Bernd Schmid

- Coach of Women's National Team Germany (2019 – 2022)
- Coach of the BWLV Juniors Team for more than 10 years
- 5 times competition sports director (including German Junior Nationals 2023, 1991, Nationals 1996 and 1998)
- Member of the National Gliding Team Germany 18-m-class 2015 – 2017
- Team Captain of Team Germany WGC 2021 Montlucon, WWGC 2022 Husbands Bosworth and WGC 2023 Narromine.
- experienced competition pilot since 1976.
- Professional background as plant manager for more than 1.000 workers in electronic industries

### **Proposed Organisation of the event:**

Based on the experiences gained with previous gliding competitions, we propose the following milestones:

- Spring 2023: IGC decision on the bid
- End of 2024: Determination of local procedures, so that they can be used and trained during the international "training" competition in 2025
- Organization of an international "training" competition in 2025 in order to test infrastructure, organising team and local procedures (August 2025 or before the JEGC 2025)
- Proposal: Training week July 20<sup>th</sup> to 24<sup>th</sup> 2026
- Competition: July 25<sup>th</sup> to August 8<sup>th</sup> 2026
- (This proposal is flexible within one week)

### **Airfield:**

Aalen-Elchingen / EDPA (Germany)

### **Contact person (for the applicant):**

Name: Christof Geissler

Address: Deutscher Aero Club e.V. - Bundeskommission Segelflug

Email address: christof\_geissler@t-online.de

Mobile Number: +49 151-41692274

## **1. Event and Year**

This bid is about the 14th Juniors World Gliding Championships in 2026, in Club and Standard Class.

## **2. Site**

### **2.1**

Name of the airfield: Aalen-Elchingen (ICAO: EDPA)

The village of Elchingen is located 20 km east of Aalen. The next town is Neresheim located about 6 km away by car. Aalen is a midsize town with approx. 66.000 inhabitants.

The airfield of Aalen-Elchingen (EDPA) comprises two runways, the main concrete runway (dimensions 1.000m x 25m), a glider strip (dimensions 1.000m x 70m). The entire area covers more than 50.000 m<sup>2</sup>. During the competition the whole width of the glider strip (approx. 75 m) is available. During competitions, the entire area is accessible by car. In case of an interruption during take-off, a sizeable number of outlanding options are available in both directions.

See Annex A.

Short historic view at EDPA:

On March 7<sup>th</sup> 1954 the first winch launch was carried out at the existing airfield area. In 1955 the first hangar was built and a second hangar followed in 1958. In 1965 the concrete runway was completed with a length of 600 m. The tower followed in 1967.

In 1969 the first gliding competition took place.

In 1976 the concrete runway was extended up to 1.000 m.

In 1980 the first German National championship was carried out with 96 competitors.

Between 1968 to 2017 more than 15 competitions took place at Elchingen among them 6 German nationals.

During the time of a gliding competition, the competition itself has priority over other aviation activities.

2.1.1 Coordinates: 48°46'44"N – 10°15'57"E

2.1.2 Direction and distance to nearest town, population of this town:

The airfield is about 6 km northwest of Neresheim, a town of 10,000 inhabitants. Larger cities around are Aalen (20 km), Ulm (50 km), Stuttgart (100 km), Munich (150km).

2.1.3 Experience of airfield staff in organising championships

- Qualification for German nationals 1970, 1975, 1977, 1981, 1990, with up to 90 competitors in Club, Standard, 15m-class
- German nationals 1980, 1984, 1988, 2002, 2009, with up to 100 competitors
- Qualification competition for German Nationals for Juniors 2017, 65 competitors in Club and Standard class
- German Junior Nationals 2023 in Club and Standard class, 80 competitors

## 2.2 Proposed period for the event

### 2.2.1 Training Dates

Training will be possible starting on Sunday, July 19<sup>th</sup> 2026 till Friday, July 24<sup>th</sup> 2026.

### 2.2.2 Competition dates

Opening Ceremony: Saturday, July 25<sup>th</sup> 2026, 10am local time

Competition: Sunday, July 26<sup>th</sup> - Friday, August 7<sup>th</sup>, 2026

Closing Ceremony: Saturday, August 8<sup>th</sup>, 2026 10am local time

### 2.2.3 Alternate dates for championship

In order to stay in the timeframe promising favourable meteorological conditions, the competition can start one week earlier or later. This allows an early and a late scenario:

Early scenario:

Opening Ceremony: Saturday, July 18<sup>th</sup>, 10 am local time

Competition: Sunday, July 19<sup>th</sup> 2026 - Friday, July 31<sup>st</sup>, 2026

Closing Ceremony: Saturday, August 1<sup>st</sup> 2026, 10 am local time

Late scenario:

Opening Ceremony: Saturday, August 1<sup>st</sup> 2026, 10 am local time

Competition: Sunday, August 2<sup>nd</sup> - Friday, August 14<sup>th</sup>, 2026

Closing Ceremony: Saturday, August 15<sup>th</sup>, 2026, 10 am local time

## 2.3. Airfield operating data

### 2.3.1 Surface of airfield, number and directions of runways

An overview of the two runways, the taxiways as well as aerial pictures can be found in Annex A. All runways have an orientation of 09/27, in accordance to the main wind direction in Germany. All runways may be used for gliding operations.

### 2.3.2 Number of towplanes employed

For towing between 8 - 10 towplanes will be used. Most of the towplanes will be ultra-light aircrafts to guarantee to lowest cost in towing during the

competition. Based on experience with previous competitions, this number ensures a swift and smooth starting procedure.

#### 2.3.3 Meteorological facilities available

A meteorologist with extensive experience in gliding competitions will permanently be on-site in order to provide daily and if needed ad-hoc meteo information. High-speed internet access is available at the airfield, ensuring all necessary access to public and non-public meteorological information.

#### 2.3.4 Parking facilities for gliders

The large apron and space besides the runways provide enough space for rigging and parking gliders outside.

#### 2.3.5 Repair facilities for gliders

The club workshop is available for small repairs. Germany's main glider manufacturers will provide support for larger repairs. In addition, there are several commercial repair facilities in the proximity of the airfield (between 40km to 120 km).

#### 2.3.6 Repair facilities for radio and instruments

The club will organize some spare radios and basic instrument from the popular suppliers (Winter, Becker, Funke, TQ-Avionics).

We will ask LX Avionic for a special service during the whole event time.

#### 2.3.7 Oxygen requirements and supply facilities, if required

Since gliding is limited to the airspace below FL 95, oxygen will not be required for the competition.

#### 2.3.7 What plans do you have to implement the FAI Environmental Code of Conduct during your event?

Our airfield is one successful example for efficient use of resources. A huge number of photovoltaic panels are installed on every hangar. A total of 410 kWp are installed. In average years the factor is 1.000 for the power supplied in, i.e. 410 MWh!

The surface water of all paved areas of the airfield is collected and conveyed in pipes to a basin.

There is a strict waste management with selective waste collection. Whenever possible we choose food and beverages in multi- cycle systems and arrange extra collection for the so called "Green dot" packaging.

To protect the apron, RWY and TWY from weed we use no chemicals. In 2015 a non-chemical "Hot Foam" weed-control without herbicides was established.

## 2.4 Airfield Infrastructure

### 2.4.1 Briefing Room

Briefings will be held in one of the large hangars. The briefing space will provide enough room for up to 150 people and contain all necessary pieces of equipment. It is easily accessible from the camping ground and a parking lot will be established to ensure quick transportation to the grid after briefings.

### 2.4.2 Common Room(s) for the competitors

Besides the hangar including the briefing space, an additional facility will be available as a common room for the competitors. There will be room for up to 120 people and an open-air terrace. In addition, the local restaurant on the airfield provides a spacious terrace.

### 2.4.3 Meeting Room for the International Jury

A private conference room is available for meetings of the Jury which is located in the tower. This room contains a needed infrastructure like PCs, Internet access and a printer.

### 2.4.4 Press Centre

A press centre will be established at the airfield.

### 2.4.5 Communication and internet equipment

The airfield is equipped with a high-speed internet access. High-speed WiFi is installed across the camping ground and the apron. The access code will be available for all participants of the competition. In addition, there is high-speed internet access available through all major German mobile network operators.

### 2.4.6 Post and Banking

Post and Banking facilities are available in Neresheim, about 5km from the airfield.

### 2.4.7 Insurance availability

Same as in 2.4.6.

### 2.4.8 Toilets, wash rooms and shower rooms

There are toilets and showers permanently installed on the camping ground. Additional facilities will be provided during the competition. There will be separate toilets and showers for women and men. Two washing machines are installed.

### 2.4.9 Car parking

Extensive parking lots for the competitors and their teams are available on the spacious camping ground. During gliding operations, the cars can temporarily be parked close to the grid. An additional parking lot for visitors is available next to the tower building, close to the apron.

#### 2.4.10 Emergency (including fire)

The city of Neresheim provides a fire brigade and a regional police centre. A rescue plan exists, ensuring fast response times. In addition, a rescue car and fire car are available at the airfield to provide a very quick response in case of an accident.

#### 2.4.11 Medical and First Aid

Two hospitals are located at a distance of 20km in Aalen (northwest) and Heidenheim (southwest) of the airfield. A rescue helicopter is available on demand. In addition, there are several practicing doctors located in Neresheim.

During the entire competition a doctor or a first aid assistant will be located on the airfield to provide any help which is needed. A telephone number for first aid will be established and given to the crews.

### **3. Accommodation and food for competitors**

#### 3.1 Accommodation facilities available in the local area

There are several hotels, guest houses and youth hostels located within the surrounding of Neresheim. For example, in the famous monastery of Neresheim, 50 rooms for accommodation are available. Some smaller hotels are also available in the nearer surrounding of EDPA (max. 15 mins to drive by car).

More information can be found: <http://www.haertsfeld.de/gastlichkeit/Essen-Trinken>

#### 3.2 Camping facilities at the airfield

The camping ground is located north of the runway, within 2 minutes walking distance to the briefing room. It provides space and electrical facilities for up to 80 caravans or tents.

#### 3.3 Caravan hiring

We will contact possible providers for caravan hiring and we negotiate a discount for the WJGC if possible.

#### 3.4 Catering for competitors at the airfield

Catering service will be provided by members of the club and the airfield restaurant. Additional restaurants and facilities are available close by in the surrounding villages. For self-catering, there are a couple of supermarkets available in Neresheim, within 8 minutes driving distance.

### **4. Competition area**

#### 4.1 Topography in the contest area

EDPA is located at the eastern Alb-Region. The Alb is an average mountain region in the south-western part of Germany. The elevation varies from 400 m MSL up to 1.000m MSL. This average mountain region provides excellent thermal conditions.

The contest area with flight traces of the year 2022 which were carried out from EDPA as starting point. Each year a couple of 1.000km flights were successfully flown. (See Annex C)

4.2 A comprehensive survey of meteorological conditions (see Annex B)  
South-West Germany is dominated by a midrange mountain structure up to 1 500m MSL (Black Forest, the Alb, Odenwald, Spessart, Rhön, Thuringian Forest, Oberpfälzer Forest and Bavarian Forest). The different geological structures of these midrange mountains in combination with the flatland areas in between guarantees superb thermal conditions which can be seen on the flight traces in Annex C.

To avoid the impression that the competitors must have experience in mountain flying (like the Alps). This is truly not necessary and pilots can safely compete without special knowledge of the area and terrain.

During the competition period the weather situation mostly is dominated by a central ridge in FL 180 and high-pressure influence in Eastern Europe with a dry easterly air flow.

Such conditions usually start with good Cu-Thermals in the first days and blue thermals up to 2.200m MSL in the days thereafter. Common cloud bases are around 1.800m to 2.500m MSL. In case of high temperatures and marginal stability, cloud bases >2.500m MSL can be expected. These conditions are commonly quite stable and ensure several contest days in a row.

#### 4.3 Airspace restrictions in the contest area

In most parts of Germany, gliding is limited to altitudes below FL95. Besides that, there are no other airspace restrictions over the airfield itself. 50km to the west the class C airspace of the international airport of Stuttgart goes down to 7.500 feet. Special arrangements for gliders in the area of Stuttgart are established. A daily update will be given to the pilots during the briefing.

A similar procedure is available for the airspace of the airport of Nuernberg in the north east of the competition area.

Please also refer to Annex C for an airspace map of 2022.

#### 4.4 Typical tasks to be expected

Typical task lengths for a competition with 85 competitors in late July range between 300 km and up to 500 km. On a very good day, competitors may expect a 600 km task to be set around Stuttgart or Nuernberg. Therefore, we can expect a lot of 1000 points scoring days.

#### 4.5 Road and traffic conditions



Elchingen (EDPA) is located close to an exit of the federal highway A7. In general, the roads fulfil the highest standards and due to the low population density, the traffic is very light. Furthermore, Aalen possesses a well frequented railway station and can be reached by train from Frankfurt and Munich within 2,5 hours.

#### 4.6 Outlanding situation

The outlanding opportunities in the proposed competition area are very numerous and easy in the usage. Also, a lot of airfields are available in case of an outlanding situation. For example, along the Swabian and Franconian Alb, airfields exist every 5 km to 10 km.

During the proposed time for the competition the harvest is already in progress and a lot of safe outlanding opportunities will be available mostly large and even fields. The accessibility of the outlanding places is no issue as the traffic infrastructure in Germany is outstanding.

## 5. Rules

5.1 Indicate the options intended to be used from Annex A for:

5.1.1 Start Geometry: 7.4.3 a - Start Line

5.1.2 Start Options: 7.4.2 a and b – Normal Start and PEV-Start

5.1.2 Tasks: 6.3.1 Racing Task and 6.3.2 Assigned Area Task (AAT)

5.1.3 Finish procedures: 7.7.2 a - Finish Ring

5.1.4 Scoring: 8.1 (Classic System) and 8.1.2 (Team Cup)

5.2 Indicate any particular conditions or possible restrictions that may be applied:

5.2.1 For pilots and crews

Pilots must have a valid ICAO compliant glider licence including the starting method chosen for the competition. Depending on the country of origin, pilots without an EU license may have to transcribe their license in accordance to EU regulation 1178/2011 Annex III. Furthermore, for some countries visa regulations apply for visits to the European Union.

5.2.2 For sailplane and equipment

An entry permission must be granted by German aviation authority LBA for sailplanes registered under a restricted type certificate outside of the EU. Flight documentation must be conducted using IGC approved flight recorders. This also applies to backup devices. Any type of collision avoidance-equipment must be compatible with such equipment used in Europe (e.g. FLARM).

5.3 Number of competitors:

5.3.1 State the maximum number of competitors that may enter the competition:

- Club Class: max. 45
- Standard Class: max. 40

Overall, the maximum number of gliders during the competition is 85. One grid for 85 gliders with 4 gliders in a row.

5.3.1.1 Provide explanation for this number

The large dimensions of the airfield allow setting up one long grid that includes up to 85 gliders of all classes. Starting rows include 4 club class or standard class gliders. The take-off track is obstacle-free in both directions (see Annex A). For landing, all available runways may be used to the full length of the airfield.

5.3.2 Indicate how the classes will be separated for:

5.3.2.1 Starts

Starting points will be separated by approx. 10km for all classes. Starting times will be different for the two classes.

5.3.2.2 On task

There will be different tracks for each class without crossing courses.

5.3.2.3 Finishing and landing

The last turnpoint will be set to align the pilots for a straight landing. The large landing field and approaches free of obstacles ensure safe landing of many gliders in a short timeframe. Pilots are encouraged to make long landings to give way for others.

## 6. Costs

6.1 Entry fee: 850 € per glider (in 2026)

6.1.1 Services included: The entry fee covers per pilot based on 85 participants and cost situation based on prices 12/2022):

|   |      |
|---|------|
| the operational costs of the organiser, such as facilities, airfield preparation and usage, grid operations, etc. | 520€ |
| water ballast and facilities  | 20€  |
| competition map   | 60€  |
| costs for copies,   | 20€  |
| meteo service   | 15€  |
| scoring   | 15€  |
| communication system (WhatsApp)   | 25€  |
| trophies and prizes   | 25€  |
| Multiple WiFi internet access points on the airfield  |      |
| equipment like scales, beamer and sound equipment   | 50€  |

|  |     |
|--|-----|
| rental costs for live-tracking screen, | 15€ |
| insurance costs                        | 30€ |
| welcome packages for the competitors   | 25€ |
| civil services                         | 30€ |

We have taken into account the rate of inflation in Germany during the next 3 years. Taking into account that the current situation of inflation will be reduced to a normal level of 3 to 4%. If the inflation will not develop as stated we have to adapt the entry fee accordingly (increase or decrease).

#### 6.1.2

In EDPA there will be one price for towing the competitors without taking into account the type of tow plane during the competition.

The trend of types of towing machines heads for UL aircrafts like Dynamic, Breezer, Bristol. Therefore, it would be most likely that the whole towing process will be carried out only with these UL- aircrafts during the JWGC 2026.

We will charge 52 € per lift up to 600m /GND or 2.000 ft/AGL during the championship in 2026. This price is subject to the general price development in Germany and the fuel price development in aviation.

The same assumption was indicated as for the entry fee. We adapted the towing costs accordingly to the rate of inflation in Germany during the next 3 years. If the inflation will not develop as stated we have to adapt the towing price accordingly (increase or decrease).

**Additional changes of the fuel prices will also influence the towing costs (increase or decrease).**

This does not apply for towing gliders back from “outlanding airfields” and is subject to notification on site in 2026.

- 6.2 Price of fuel per litre as of December 2022 at the airfield fuel station of EDPA:  
 Petrol (ROZ95): 1.75€/l  
 Diesel: 1,80€/l  
 AVGAS 100LL: EUR 2,89€/l
- 6.3 Rental cars (prices 12/2022)  
 Car rental fees depend on the type of car. Average daily fees start around 60€ per day. Larger cars equipped for airfield usage (tow hook) cost around 150€ per day.
- 6.4 Accommodation (prices 10/2022)

<http://www.haertsfeld.de/gastlichkeit/Essen-Trinken>

6.4.1 Hotels: 50€ to 80€ (single room), 60€ to 120€ (double room)

6.4.2 Apartments: from 60€ to 100€ per day (2-4 guests)

6.4.3 Bed and Breakfast: 30-40€ per day

6.4.4 Camping: 400€ camping fee on the airfield per pilot and up to two crew members for the training week and the two contest weeks. Camping fee for additional crew members is 120€ per person (in 2023)

Depending on the size, caravans or campers can be hired at a cost of 60 - 100€ per day (10/2022)

## 6.5 Catering

### 6.5.1 Hotels

Breakfast is included in typical hotel room rates.

### 6.5.2 Restaurants (10/2022)

Approx. 15€ - 40€ per meal.

### 6.5.3 Airfield

Approx. 40€ per day, including breakfast, lunch and dinner

## 6.6 Provide an indicative example for the expected total costs during the contest period for a pilot with 2 crew members (based on prices of the year 2022)

|                |   |
|----------------|---|
| Entry fee:     | 850 €                                     |
| Aerotows:      | 520 € (10 tows x 52€)                     |
| Accommodation: | 400 € for camping on the airfield         |
| Catering:      | 1.200 € (3 persons, 16 days, 25€ per day) |
| Car rental:    | 800 € (50€/car, 1 car, 16 days)           |

Sum: 3.770 €

Savings are possible through self-catering. Additional expenses may apply if a glider needs to be rented or transported to Germany.

## 7. Glider Hiring

7.1 The availability of local gliders for hire: Hiring competition gliders is common in Germany, hence a variety of gliders is available. The DAeC will assist in brokering glider hires as needed.

Therefore, an overseas transportation of gliders for the JWGC seems not to be necessarily needed.

7.2 The costs of hire: Depending on the type of glider, costs range from 800 - 1.200€ per week (prices in 2022).

7.3 Any restrictions on hire  
To be determined if required.

## **8. Glider Import**

8.1 Ports or cities of entry  
To be determined if necessary.

8.2 Customs requirements  
Non within the EU and states of the Schengen Convention.

8.3 Customs brokers  
To be determined.

8.4 Estimated costs and fees, including cost of transport of containers  
To be determined if necessary

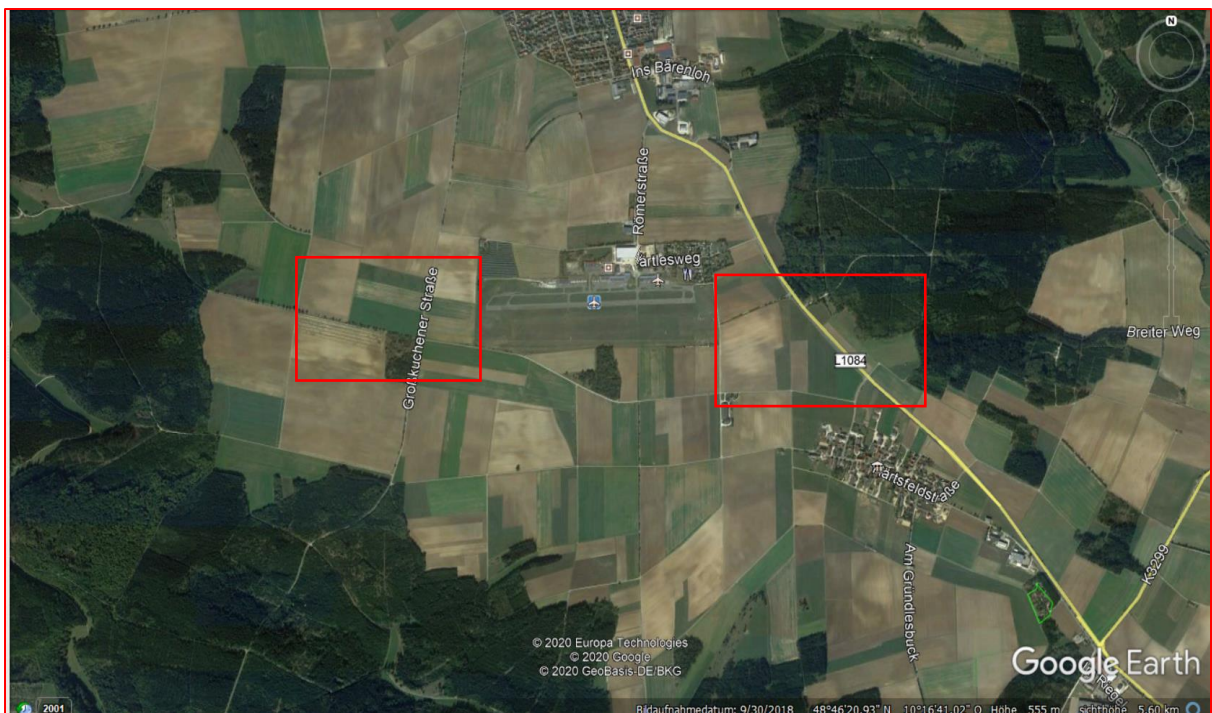
## **9. Training**

9.1 Provide details of any proposed training opportunities for teams and individuals prior to the Championships.

In 2025, an international gliding competition will be organised at EDPA. The training competition will be held according to Annex A rules and the local procedures as for the JWGC 2026. Besides that, individual JWGC competitors may familiarise themselves with the region and the airfield during gliding camps that are organised every year at the airfield.

## Annex A: Airfield overview and contest operations

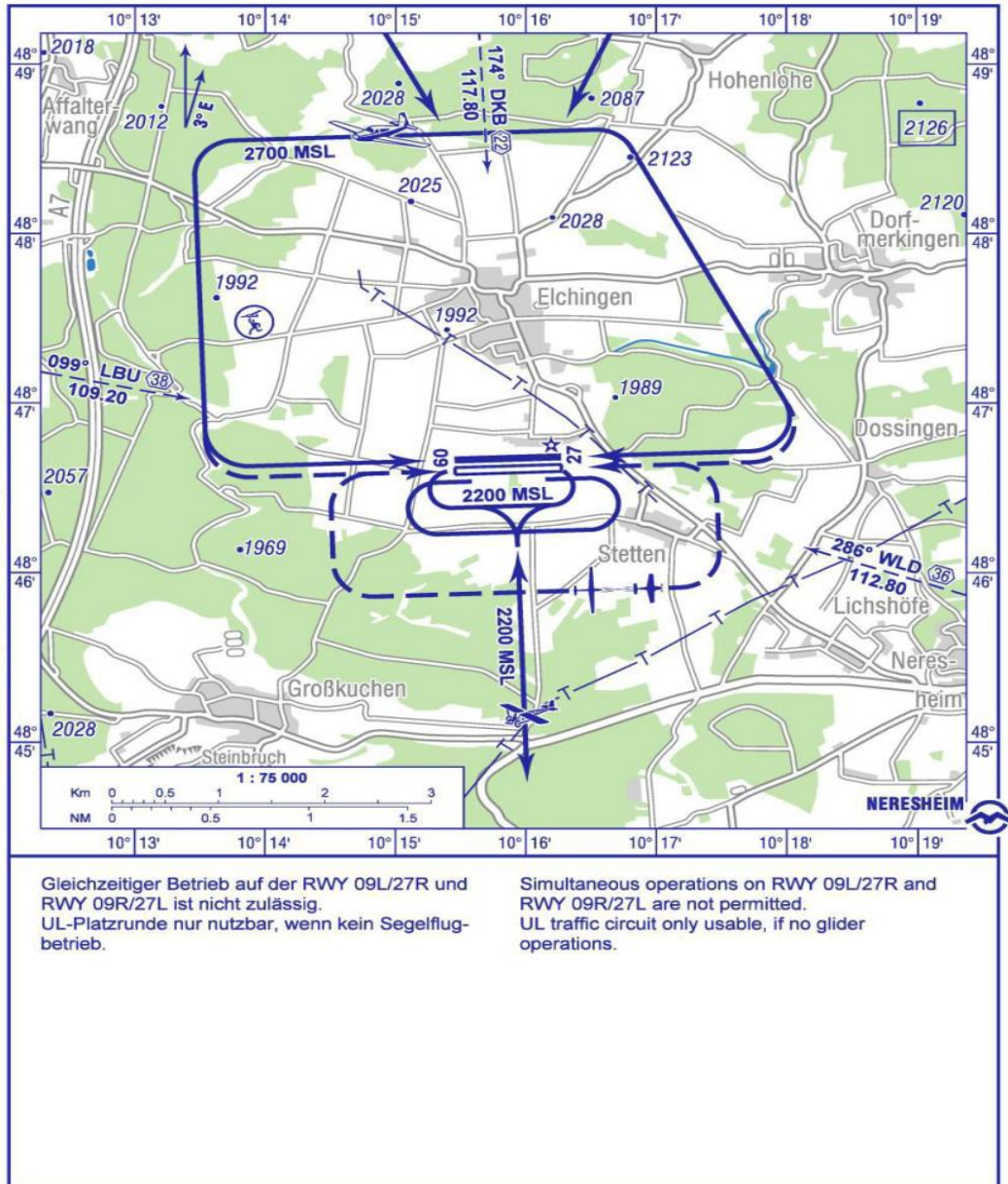
Airfield view from above, showing the runways, grass strips, hangers and camping facilities



Outlanding options in case of an interruption during the take-off procedure



Berichtigung: AALEN INFO (8.33 kHz), FIS, Missweisung.  
Correction: AALEN INFO (8.33 kHz), FIS, variation.





Gridding



A view from above: Gridding during the German Championship in 2009 (Standard Class, 15-m-Class and Double Seater)



Briefing (Hangar #1)

Competition bureau



Camping Area

Parking





The terrace of our airfield restaurant

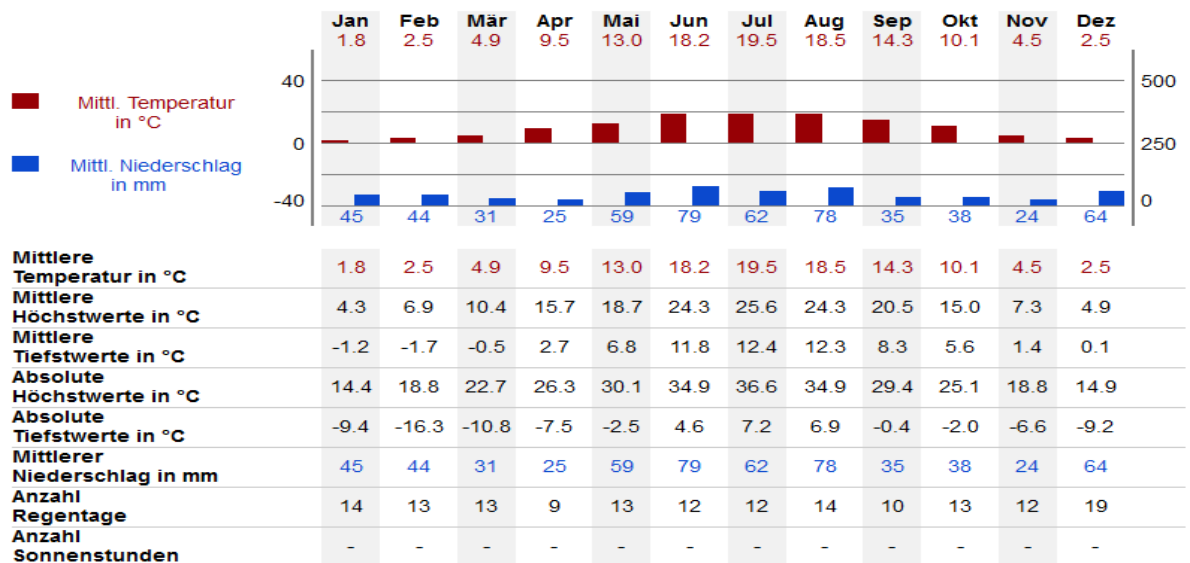


View of the Monastery Neresheim - 8 minutes to drive from the airfield:

## Annex B: climate

Source: <https://de.weatherspark.com>, <https://www.wetterdienst.de> and <https://www.meteoblue.com> data shown for Neresheim

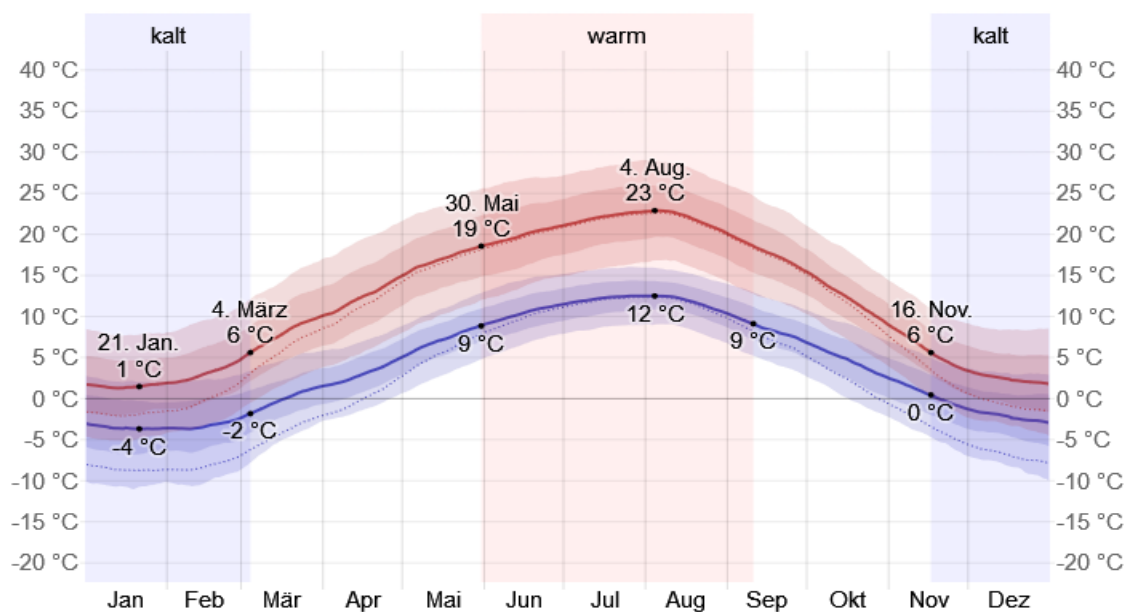
### Precipitation and temperature chart for Neresheim (2017-2022)



Datenbasis: 09/2017-08/2022

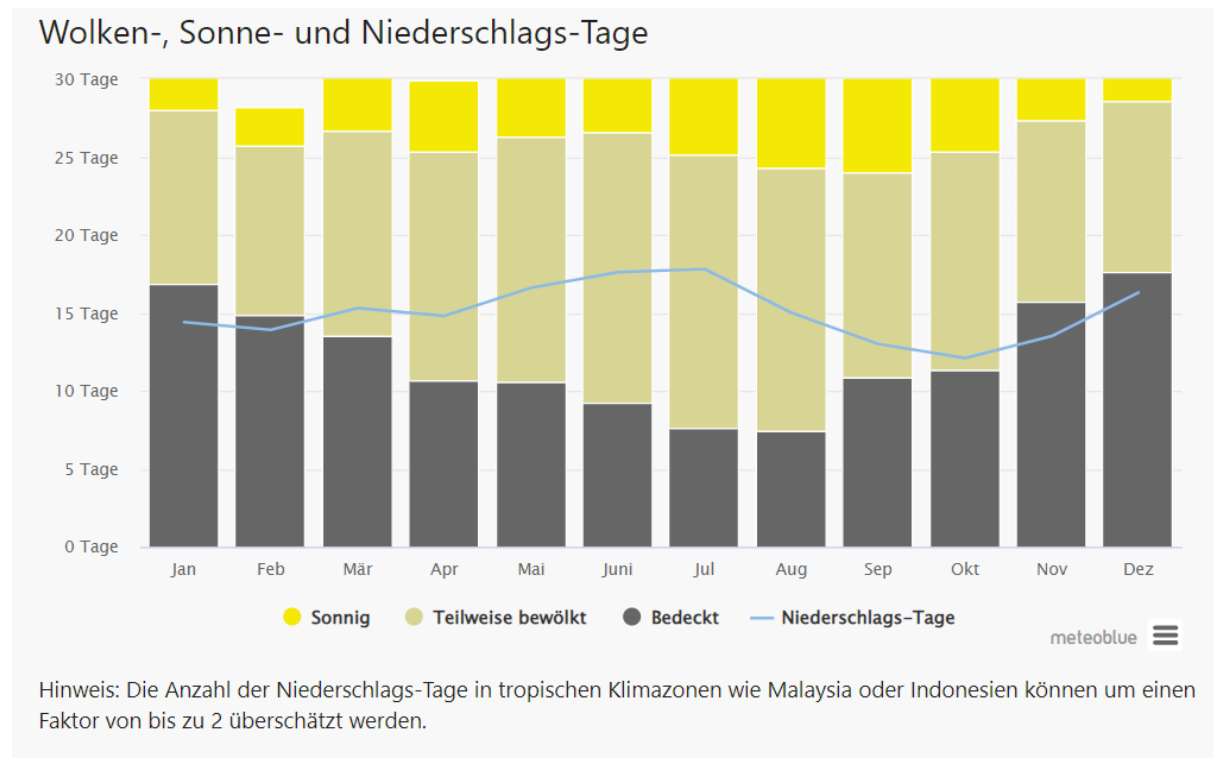
Die Klimastatistik für Neresheim wird jeweils zum Monatsbeginn mit den neuesten Daten für Temperatur, Niederschlag, Regentage und Sonnenstunden aktualisiert.

### Temperature chart for Neresheim



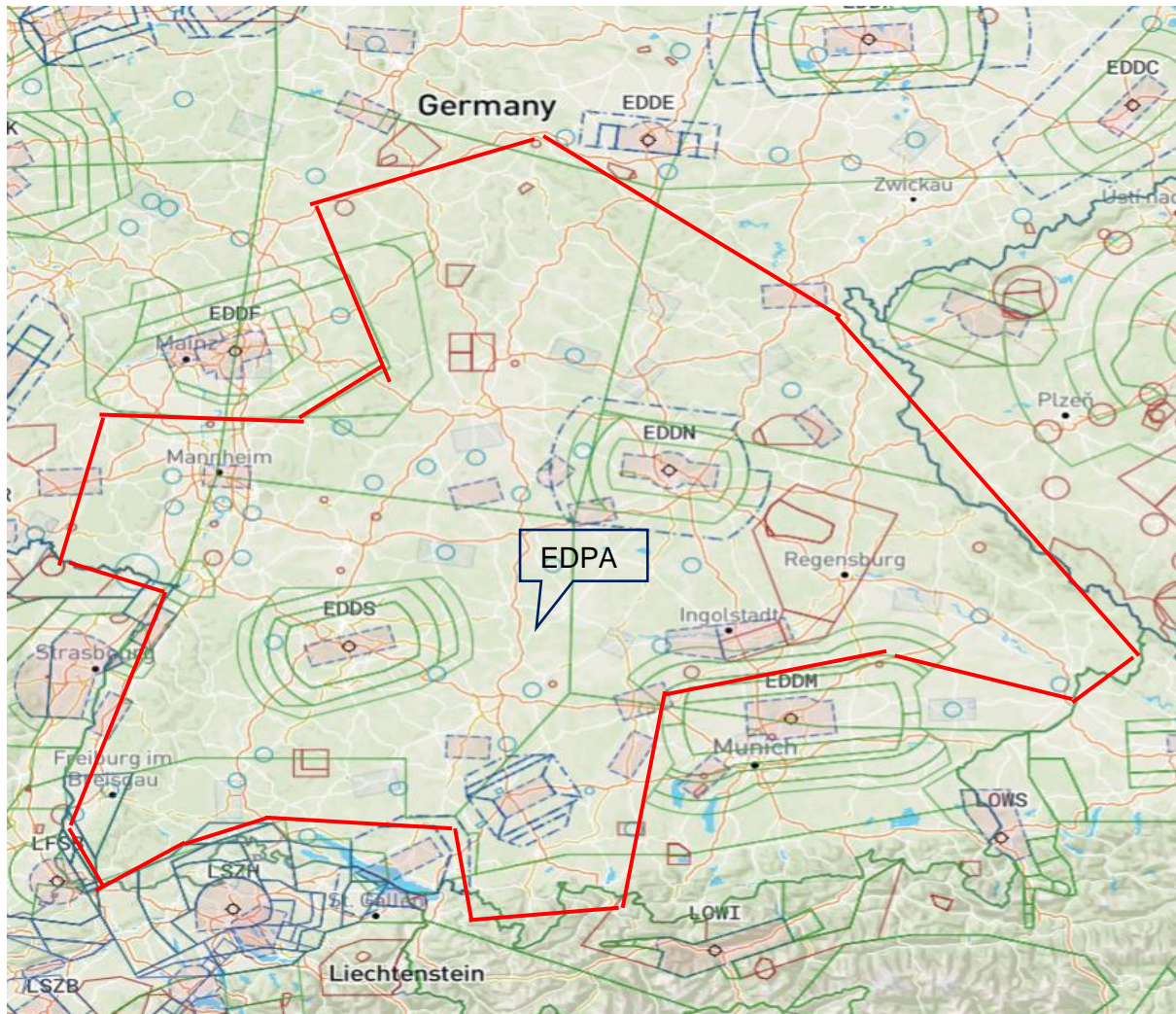
Data: 1991 - 2021 Min. Temperatur (°C), Max. Temperatur (°C), Niederschlag (mm), Luftfeuchtigkeit, Regentage. Data: 1999 - 2019: Sonnenstd.

## Days with sunshine, clouds, and precipitation for Neresheim





**Annex C: Proposed contest area, gliding activities during the season, airspace condition Stuttgart airport**



red outline: proposed contest area



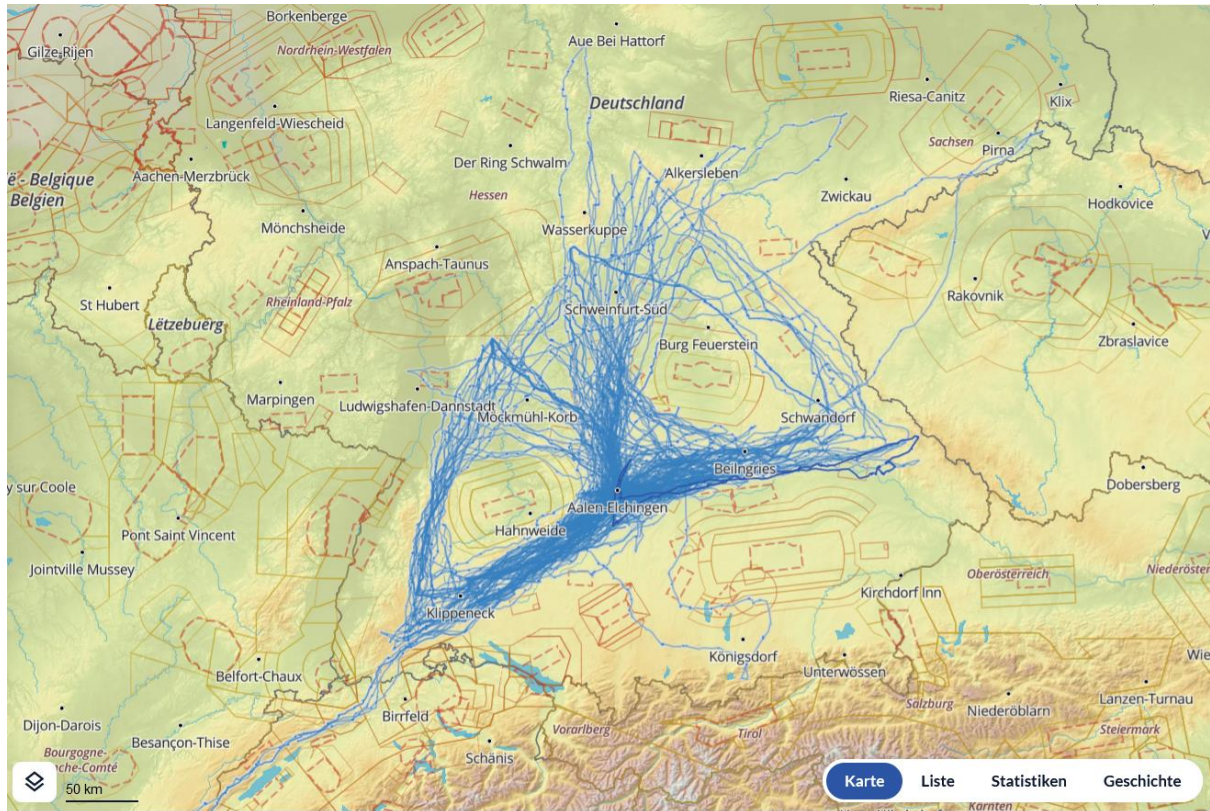
Flight traces flown in the year 2022 with starting point EDPA

Can be seen: [https://www.weglide.org/flight?order\\_by=-distance&airport=Aalen-Elchingen,151977&club=LSR%2520Aalen,5&season=2022](https://www.weglide.org/flight?order_by=-distance&airport=Aalen-Elchingen,151977&club=LSR%2520Aalen,5&season=2022)

Flown km in the season 2022: approx. 260.000 km (116 Pilots, 582 flights)

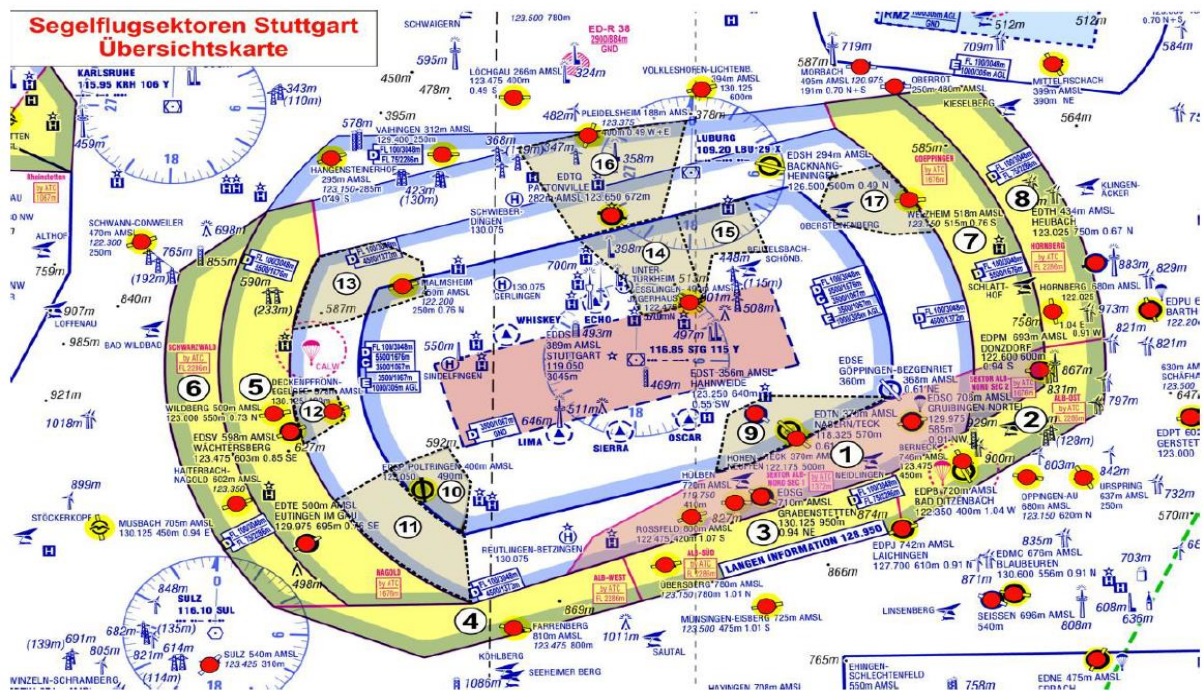
[https://www.weglide.org/ranking/free?season=2022&category=airport\\_total](https://www.weglide.org/ranking/free?season=2022&category=airport_total)





Flights August 2022 with starting point EDPA

Can be seen: [https://www.weglide.org/flight/map?order\\_by=-points&country=Deutschland.DE&airport=Aalen-Elchingen,151977&month=August,8](https://www.weglide.org/flight/map?order_by=-points&country=Deutschland.DE&airport=Aalen-Elchingen,151977&month=August,8)



Airspace conditions for gliding activities around the Stuttgart international airport